



Whitehall Road, London, E4

BUTLER & STAG



A charming and spacious first-floor apartment located conveniently for Chingford Overground Station and Epping Forest. Ideal for first time buyers.



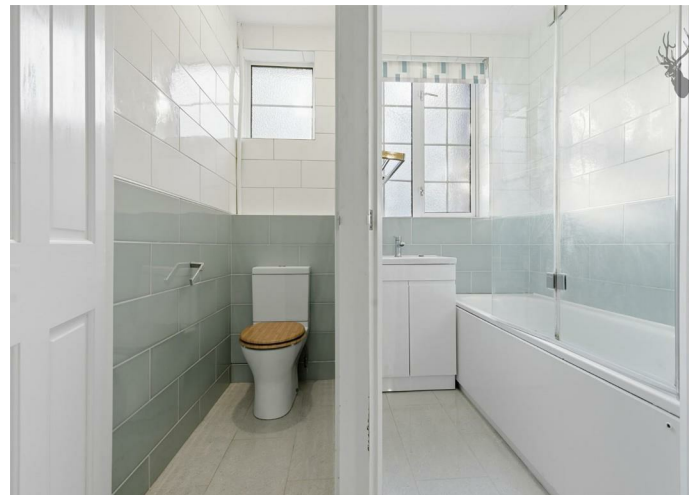
Leasehold

- Light and Spacious First Floor Apartment
- Long Lease - 145 Years Remaining
- On The Doorstep of Epping Forest
- Well Presented Throughout
- Walking Distance to Chingford Overground
- Ideal First Time Purchase

A beautifully presented and spacious one-bedroom first-floor flat, quietly tucked away within this peaceful and highly sought-after development in North Chingford. Ideally located, the property is just a short walk from the main line station and the open green spaces of Epping Forest.

Having been well maintained and thoughtfully modernised, the flat features a quality fitted kitchen, a stylish bathroom with a separate WC, and access to attractive communal gardens. With a long lease and an inviting atmosphere, this home would make an ideal first-time purchase.

Life in North Chingford offers the best of both worlds: fast rail links whisk you into Liverpool Street in under 30 minutes, while at home you'll find leafy streets, stylish cafés, and the open green space of Epping Forest just moments away. The area's vibrant social scene includes modern gyms, boutique shops, and welcoming pubs, perfect for unwinding after work or meeting friends. With a mix of contemporary apartments and charming period homes, North Chingford offers flexibility for every lifestyle. It's the ideal choice for young professionals seeking career convenience without sacrificing weekend relaxation.





Seymour Court

Approx. Gross Internal Area 54.5 Sq M (586.5 Sq Ft)

BUTLER & STAG



Measurements are approximate and for illustration purposes only. While we do not doubt the accuracy and completeness, we advise you conduct a careful independent assessment of the property to determine monetary value.
© @modephotouk www.modephoto.co.uk

IMPORTANT NOTICE - These particulars have been prepared in good faith and they are not intended to constitute part of an offer or contract. We have not performed a structural survey on this property and the services, appliances and specific fittings have not been tested. All photographs, measurements, floor plans and distances referred to are given as a guide and should not be relied upon.

BUTLER & STAG

☎ 01992 667666

🏠 4 Forest Drive, Theydon Bois, Essex, CM16 7EY

✉ theydon@butlerandstag.com

www.butlerandstag.uk